

# Digital Application Sheet



VEHICLE MANUFACTURER	Ford
MODEL	Transit Connect
YEAR OF MANUFACTURE	2006 on
ENGINE TYPE	L200
TRANSMISSION	Manual
VOLTAGE	12V



## STONERIDGE DIGITAL KIT FOR THIS VEHICLE:

**9800-003 Required for CITO Version Software**

**9800-004 Required for Non-CITO Version Software**

### ADDITIONAL PARTS REQUIRED

CAN INTERFACE	6700-019
TACHOGRAPH MOUNTING POD	6350-026

### ADDITIONAL VEHICLE MANUFACTURERS PARTS REQUIRED


### FITTING INFORMATION



SE5000



M1N1 ADAPTOR



M1N1 CABLE HARNESS

#### Workshop Technical Support

Tel +44 (0) 1382 866 400 (choose opt.2. opt.1 )

Fax +44 (0) 1382 866 401

#### Sales Office

Tel +44 (0) 1382 866 400 (choose opt.1)

Fax +44 (0) 1382 866 401



Whilst we have endeavoured to ensure the accuracy of the information supplied, Stoneridge Electronics cannot be held responsible for any errors or omissions. It is the installer's responsibility to ensure compliance with specific vehicle manufacturers repair procedures, especially with regard to the procedure for disconnection/reconnection of the battery. Failure to comply with the vehicle manufacturers instructions may result in personal injury and/or component damage/data loss.

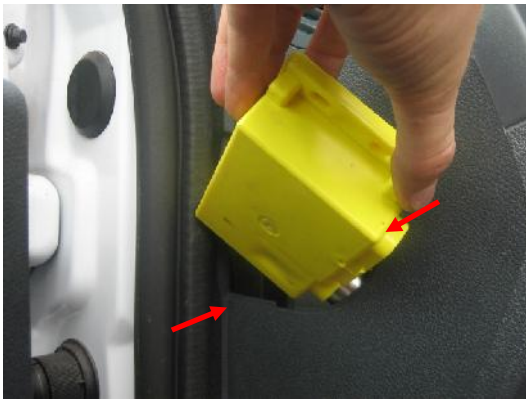
# Digital Application Sheet



1. Unclip the cover in the centre of the dashboard and drill a hole to feed the wires being careful not to cut through wiring below.



2. Unclip the small cover on the side panel of the passengers door.



3. Slip the M1N1 adaptor into the hole sender first.



4. Twist the M1N1 Adaptor round and it will drop in.



5. Dropping the glove box will allow access to the back of the M1N1 Adaptor.



6. Mark the position where the holes are to be located for drilling to secure the Adaptor.

## Workshop Technical Support

Tel +44 (0) 1382 866 400 (choose opt.2. opt.1 )

Fax +44 (0) 1382 866 401

## Sales Office

Tel +44 (0) 1382 866 400 (choose opt.1)

Fax +44 (0) 1382 866 401



Whilst we have endeavoured to ensure the accuracy of the information supplied, Stoneridge Electronics cannot be held responsible for any errors or omissions. It is the installer's responsibility to ensure compliance with specific vehicle manufacturers repair procedures, especially with regard to the procedure for disconnection/reconnection of the battery. Failure to comply with the vehicle manufacturers instructions may result in personal injury and/or component damage/data loss.



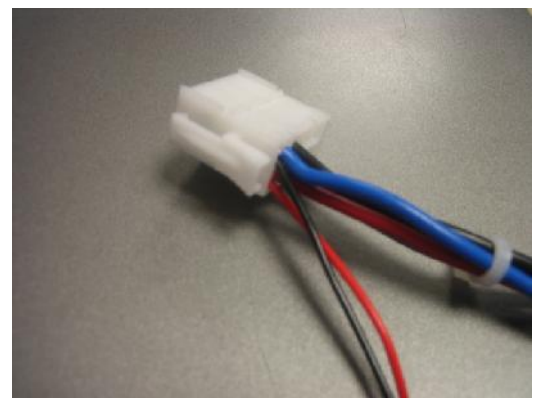
7. Connect the sender cable and adaptor cable and feed the wiring harness behind the fuse board .



8. Run the cables to the hole in the middle of the dashboard following the main wiring harness.



9. Feed the Red, Black and Sender Cables along with the tachograph power harness up through the hole in the back of the dashboard.



10. Connect Black wire from the M1N1 into Plug A Pin 5 and connect the Red wire from the M1N1 into Plug A Pin 1 of the tachograph as shown.

11. Feed the Yellow wire from the M1N1 down behind the radio and out the gap beside the EOBD plug at the drivers side.

12. Unscrew the 2 screws of the EOBD plug and pull down to allow easier access to the cables.



## Workshop Technical Support

Tel +44 (0) 1382 866 400 (choose opt.2. opt.1 )

Fax +44 (0) 1382 866 401

## Sales Office

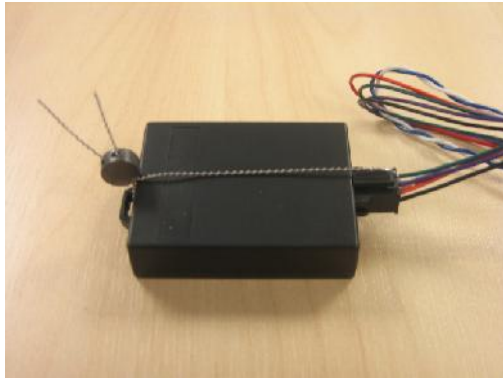
Tel +44 (0) 1382 866 400 (choose opt.1)

Fax +44 (0) 1382 866 401



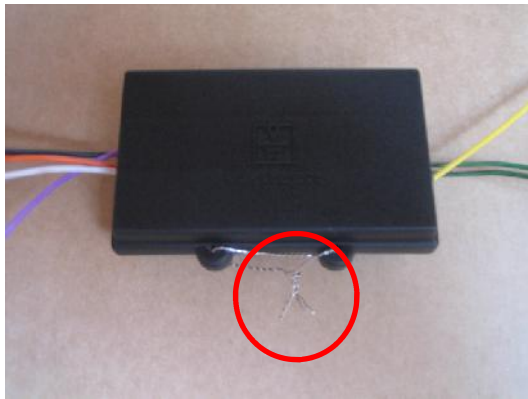
Whilst we have endeavoured to ensure the accuracy of the information supplied, Stoneridge Electronics cannot be held responsible for any errors or omissions. It is the installer's responsibility to ensure compliance with specific vehicle manufacturers repair procedures, especially with regard to the procedure for disconnection/reconnection of the battery. Failure to comply with the vehicle manufacturers instructions may result in personal injury and/or component damage/data loss.





- CAN Interface **RED** Wire to EOBD Connector **Pin 16**
- CAN Interface **BLACK** Wire to EOBD Connector **Pin 4**
- CAN Interface **WHITE** Wire to EOBD Connector **Pin 3**
- CAN Interface **BLUE** Wire to EOBD Connector **Pin 11**

13. Connect the CAN Interface to the following pins on the EOBD and seal the CAN connector.



14. Connect the **YELLOW** wire from the M1N1 to the **GREEN** wire from the CAN Interface and secure in a sealing box with sealing wire and lead seal.



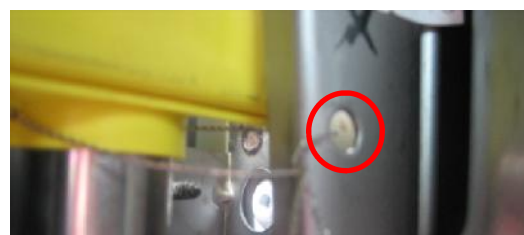
15. Connect the A and B plugs to the tachometer and secure the mounting pod to the dash.

16. Seal the sender and connector through the Red Seal provided to the Adaptor.

17. The Adaptor must be sealed to a non removable part of the vehicle. Use the hole in the chassis shown next to the Adaptor.

18. Ensure that the Workshop Plaque is filled in on the M1N1 Adaptor with the relevant data.

19. Affix the Tachograph Installation Plaque to a visible area on the vehicle and check that all the relevant data is correct.



## Workshop Technical Support

Tel +44 (0) 1382 866 400 (choose opt.2. opt.1 )

Fax +44 (0) 1382 866 401

## Sales Office

Tel +44 (0) 1382 866 400 (choose opt.1)

Fax +44 (0) 1382 866 401

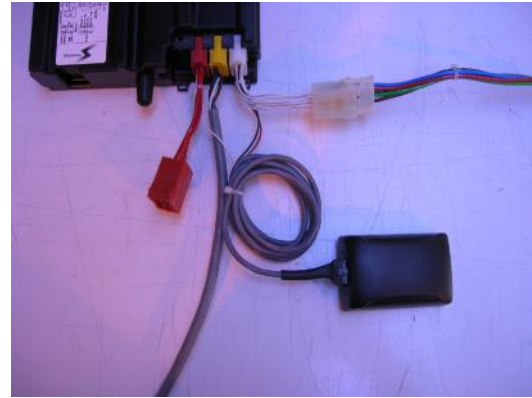


Whilst we have endeavoured to ensure the accuracy of the information supplied, Stoneridge Electronics cannot be held responsible for any errors or omissions. It is the installer's responsibility to ensure compliance with specific vehicle manufacturers repair procedures, especially with regard to the procedure for disconnection/reconnection of the battery. Failure to comply with the vehicle manufacturers instructions may result in personal injury and/or component damage/data loss.



**20.** The 2nd Source of motion is obtained by using the GPS Module and cable harness as shown.

**22.** The GPS Module should be placed in a suitable area within the cab, preferably in an area next to the windscreen.



**21.** The cable harness is connected directly in-line with the tachograph power cable when connecting to the tachograph as shown.

## Workshop Technical Support

Tel +44 (0) 1382 866 400 (choose opt.2. opt.1 )

Fax +44 (0) 1382 866 401

## Sales Office

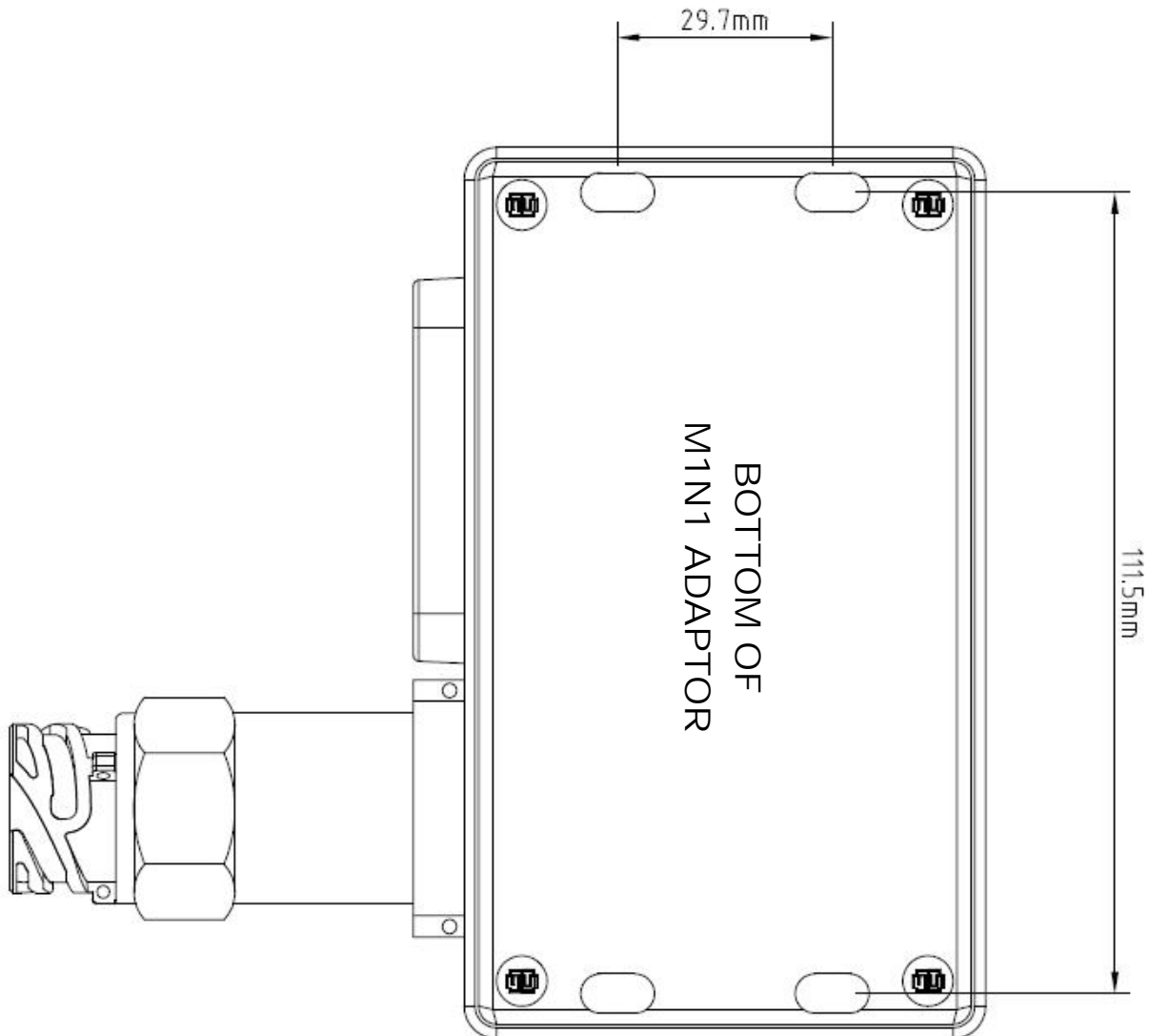
Tel +44 (0) 1382 866 400 (choose opt.1)

Fax +44 (0) 1382 866 401



Whilst we have endeavoured to ensure the accuracy of the information supplied, Stoneridge Electronics cannot be held responsible for any errors or omissions. It is the installer's responsibility to ensure compliance with specific vehicle manufacturers repair procedures, especially with regard to the procedure for disconnection/reconnection of the battery. Failure to comply with the vehicle manufacturers instructions may result in personal injury and/or component damage/data loss.

## M1N1 Template



### Workshop Technical Support

Tel +44 (0) 1382 866 400 (choose opt.2. opt.1)

Fax +44 (0) 1382 866 401

### Sales Office

Tel +44 (0) 1382 866 400 (choose opt.1)

Fax +44 (0) 1382 866 401



Whilst we have endeavoured to ensure the accuracy of the information supplied, Stoneridge Electronics cannot be held responsible for any errors or omissions. It is the installer's responsibility to ensure compliance with specific vehicle manufacturers repair procedures, especially with regard to the procedure for disconnection/reconnection of the battery. Failure to comply with the vehicle manufacturers instructions may result in personal injury and/or component damage/data loss.